

# Report reveals how the death of Connor Milne at Fairfield Quarry could have been avoided

Direct factors that led to the death of 21-year-old Connor-Shaye Campbell Milne at Fairfield Quarry at Clermont in 2018 have been revealed in a report released by Resources Safety and Health Queensland.



**Aden Stokes**

[Follow](#)



2 min read December 3, 2021 - 4:02PM

## Rockhampton

Don't miss out on the headlines from Rockhampton. Followed categories will be added to My News.

[Follow](#)

---

---

---

Removing rocks by hand from a conveyor that was operating and not isolated, with no protective guard, have been identified as direct factors that lead to the death of 21-year-old Connor-Shaye Campbell Milne at Fairfield Quarry, Clermont, in 2018, according to a report released by Resources Safety and Health Queensland.

Mr Milne was a quarry worker who had been working at the site for two weeks when he was [pulled into the rotating tail pulley of a conveyor and killed](#) on November 15.

Mr Milne was working in the Fixed Plant area at the time of the accident and was removing rocks from a moving conveyor belt with another quarry worker.

They had removed a guard and used their hands to clear rocks from the tail pulley while the conveyor was operating.



Connor Milne with his partner Shannea Farrier.

While clearing the rocks, Mr Milne's arm was caught and pulled into the tail pulley and he died from his injuries.

A Resources Safety and Health Queensland investigation report into the death of Mr Milne, said the site did not have a documented procedure for safely removing rocks from the tail pulley area.

The report stated that as a result of ongoing spillage, the plant required rocks to be removed several times a week and that it was a practice at Fairfield Quarry to remove rocks by hand, without a guard and with the conveyor still operating.

The report stated that if the equipment had been isolated and locked out, or if the guard had been on the

The report stated that if the equipment had been isolated and locked out, or if the guard had been on the equipment preventing access, the accident would not have happened.

The report also found that no site induction was conducted with Mr Milne.

FROM OUR PARTNERS [↗](#)

Stream more than 20 live news sources with Flash. **New customers try 14 days free**



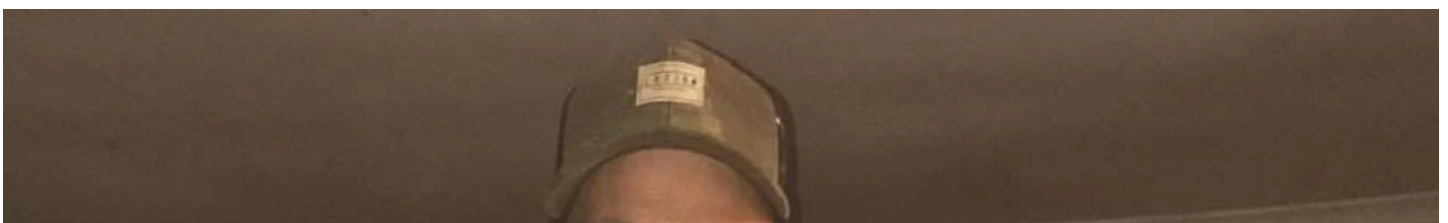
A conveyor at Fairfield Quarry, Clermont.

According to the report, an assumption was made Mr Milne would be familiar with the practices at the site through having worked at another quarry belonging to the operator and that there was no training records available to demonstrate Mr Milne's competency to operate the equipment.

The report further stated that Mr Milne was being taught how to operate the equipment by a worker who didn't hold trainer qualifications.

The report concluded that workers should never operate equipment with guards removed or incorrectly fitted and that the equipment should always be isolated and locked out before working on it.

The report further concluded that workers must be inducted into the workplace and that the equipment must be designed, operated and maintained so that it does not present an unacceptable level of risk to workers.





Connor Milne with his partner Shannea Farrier and their baby daughter Summer-Lee.

It was also noted in the conclusion of the report that supervisors must ensure that workers were trained for the tasks they were undertaking, that workers followed procedures and applied risk controls, made sure equipment was safe to operate and encourage workers to report hazards.

Charges were laid against the quarry operator, its site senior executive and a supervisor following the investigation by Resources Safety and Health Queensland Mines Inspectorate, according to the report.

The quarry operator and two of its employees were sentenced in the Emerald Industrial Magistrates Court on February 25 after pleading guilty to offences relating to failing to ensure risk to persons from quarrying operations was at an acceptable level.

The quarry operator was fined \$180,000 and the site senior executive and supervisor were fined \$45,000 and \$10,000 respectively.

The magistrate commented on the complacency at the quarry site and inadequate attention to safety during sentencing.

---

## More Coverage

[‘Hearts are broken’: Rural firey, adored dad dies in mine tragedy](#)

[Mines share concerns over ‘disproportionate’ costs for terminal expansion](#)

---