



Resources Safety & Health
Queensland

Summary report regarding death of worker
at Red October Mine (ML 95357) Queensland
on 26 November 2022

Mining and Quarrying Safety and Health Act 1999

This publication has been compiled by Resources Safety and Health Queensland

© State of Queensland, 2024

The Queensland Government supports and encourages the dissemination and exchange of its information. The copyright in this publication is licensed under a Creative Commons Attribution 4.0 International (CC BY 4.0) licence.

Under this licence you are free, without having to seek our permission, to use this publication in accordance with the licence terms.



You must keep intact the copyright notice and attribute the State of Queensland as the source of the publication. Note: Some content in this publication may have different licence terms as indicated.

For more information on this licence, visit <https://creativecommons.org/licenses/by/4.0/>.

The information contained herein is subject to change without notice. The Queensland Government shall not be liable for technical or other errors or omissions contained herein. The reader/user accepts all risks and responsibility for losses, damages, costs and other consequences resulting directly or indirectly from using this information.

Interpreter statement:

The Queensland Government is committed to providing accessible services to Queenslanders from all culturally and linguistically diverse backgrounds. If you have difficulty in understanding this document, you can contact us within Australia on 13QGOV (13 74 68) and we will arrange an interpreter to effectively communicate the report to you.



Purpose

Resources Safety and Health Queensland (RSHQ) believes providing information relating to fatalities and incidents on mine and quarry sites plays an important role in creating awareness of hazards, encouraging continuous improvement, and protecting the safety and health of mine and quarry workers.

This report has been published to:

- provide everyone who works with mines and quarries — owners, operators, supervisors, workers, and suppliers — with an understanding of the events leading to the death of a worker at a mine in Queensland.
- share information about why the incident happened and what needs to be done to reduce the likelihood of it happening again.

The accident

This report is a summary of RSHQ's investigation into the death of Mr Ronald Gordon Selig at Red October Mine, South of Winton in 2022.

At approximately 09:15 on Saturday 26 November 2022, Ronald Selig received fatal injuries when he fell approximately 5.8 meters from the roof of a workshop to the ground.

Mr Selig had been undertaking repairs to the roof of a workshop that had been damaged during a severe weather event. Whilst Mr Selig was walking along the damaged roof line, the ridge purlin gave way causing Mr Selig to fall through the roof sheeting to the ground.

Events leading up to the accident

On Thursday 24 November 2022, Mr Selig and another person, who was visiting the site, arrived at the mine and found that the roof on the workshop had been damaged during a suspected severe weather event.

On Friday 25 November 2022, Mr Selig and the other person performed a series of maintenance tasks at the mine, including works to secure the damaged roof section of the workshop.

On Saturday 26 November 2022, Mr Selig and the other person continued to undertake works to secure the damaged section of roof on the south-west side of the workshop.

Mr Selig accessed the workshop roof via the roof of the adjoining accommodation building using an extension ladder. Once on the workshop roof, he commenced removing roofing screws from its purlins.

The other person remained on the ground and was looking through a toolbox of a light truck for some lifting and rigging equipment.

On returning to the workshop, the other person found Mr Selig on the ground in the middle of the workshop with visible physical injuries.

The other person contacted emergency services via telephone. Officers from Queensland Police Service (QPS) and Queensland Ambulance Service (QAS) attended the mine in response.



Photo 1: Workshop area layout – looking north (Note: Extension ladder used by Mr Selig to access workshop roof)



Photo 2: Section of roof structure where Mr Selig was working at time of accident

Site safety factors

Site location

Red October Mine is located on Mining Lease ML95357, approximately 140km South of Winton and 155km West of Longreach in the Winton Local Government Area of Queensland. The site of the mine is considered remote being ~3.5 hours from the nearest regional centre. Access to the site is by a combination of gazetted sealed and unsealed/non-signposted roads.

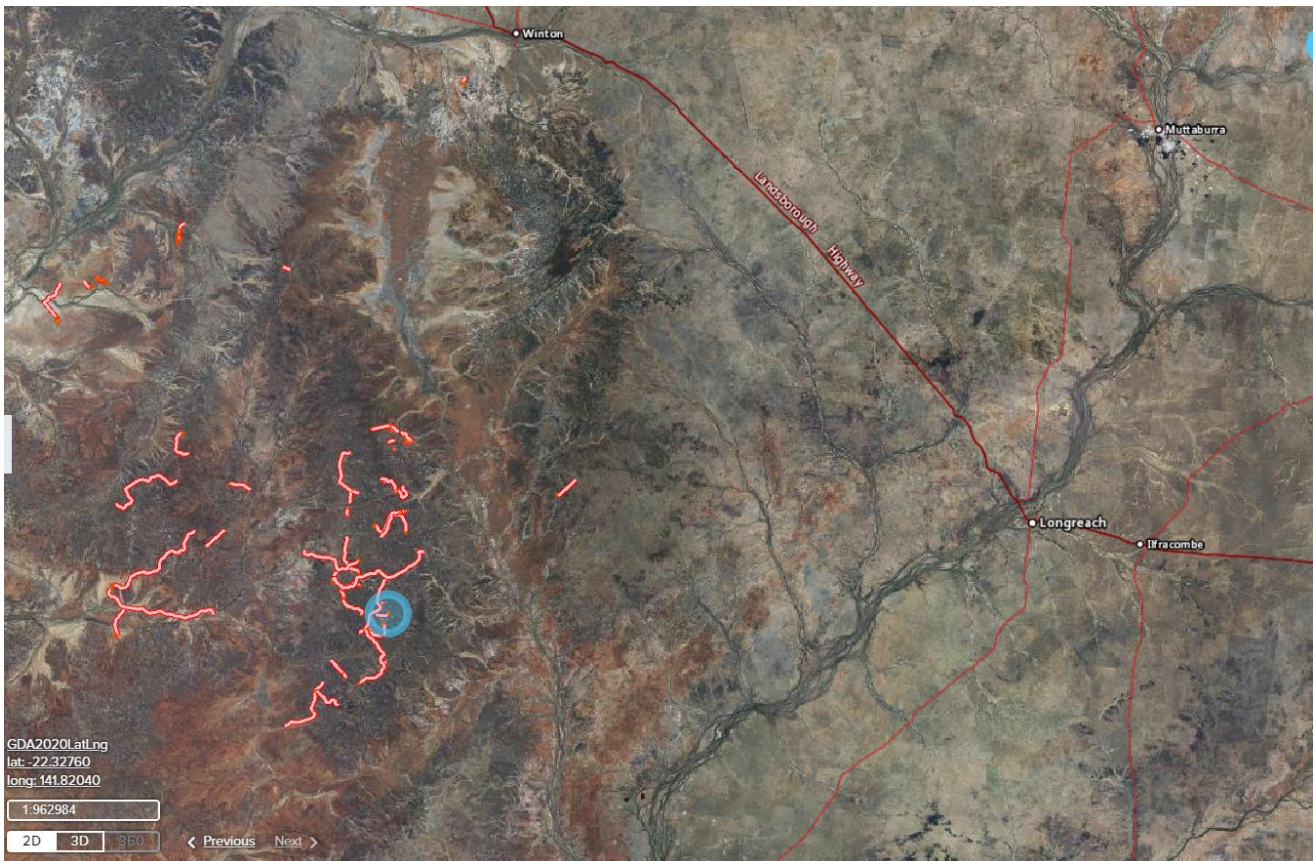


Figure 01: Mine site location in reference to Winton & Longreach

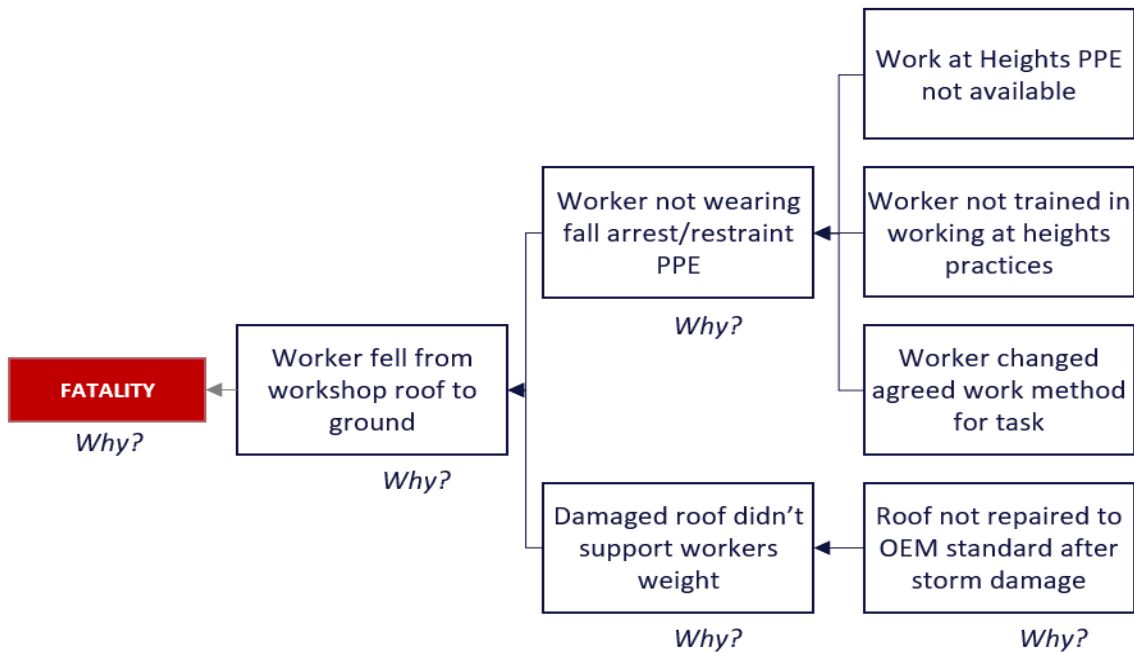
Repair of modification of structures

In 2020, the workshop's end frame was damaged when it was contacted by heavy mobile plant.

In 2021, repairs were made to the workshop's damaged end frame. These repairs were a modification to the original design & installation of the structure.

Further damage was caused on or before 24 November 2022 during a severe weather event. At the time of the accident Mr Selig and the other worker were attempting to repair this damage.

Cause map



This cause map is used to identify the root causes of a problem. In each section we ask "why did this occur?" The diagram is to be read left to right.

Key takeaways

All site senior executives should:

- ensure persons required to work at heights have adequate knowledge and are appropriately trained and assessed as competent to perform the task safely.
- ensure that where persons are required to work at height controls are identified and implemented that eliminate the risk of a person falling. If this is not possible then fall restraint/arrest must be utilised.
- ensure repairs or modifications to fixed plant structures are performed in accordance with the original equipment manufacturers design and instructions, so that it remains fit for its intended use and work environment.
- ensure emergency services are provided with detailed instructions on both the location and travel routes to enable the most efficient access to remote mining operations.

All operators should:

- ensure all plant, equipment and structures are maintained in a safe state, in accordance with the original equipment manufacturers instructions.

Relevant safety alerts and bulletins

- Safety Alert 423: [Fatal accident when mine worker fell from the roof of a workshop | Resources Safety & Health Queensland \(rshq.qld.gov.au\)](#)
- Safety Bulletin 193: [Falls from walkways and platforms | Resources Safety & Health Queensland \(rshq.qld.gov.au\)](#)

Contact

This report is a brief outline of the events around Mr Selig's fatal accident. If you require more information, please contact the Chief Inspector by email:

- rshqmmq.corro@rshq.qld.gov.au

General enquiries

- Contact the general enquiries numbers or your local Mines Inspectorate office.
- 13QGOV (13 74 68) within Australia
- +61 7 3328 4811 (+10 hours UTC) international callers

Mines Inspectorate head office

Head office

GPO Box 1321

Brisbane Qld 4001

Level 19, 275 George Street

Brisbane Qld 4000

Phone: (07) 3199 8001